

TATES

020 7602 6020



Lily Close, St Pauls Court, London W14 9YA

£459,000

A beautifully presented one bedroom apartment in St Pauls Court, a sought after development moments from Barons Court Tube station.

The property is in excellent condition throughout and is situated on the upper level (with lift) of the development.

Property comprises good sized living room, double bedroom with built in storage, modern fully fitted kitchen and shower room.

St Pauls Court is a well maintained gated development with a lovely large communal garden.

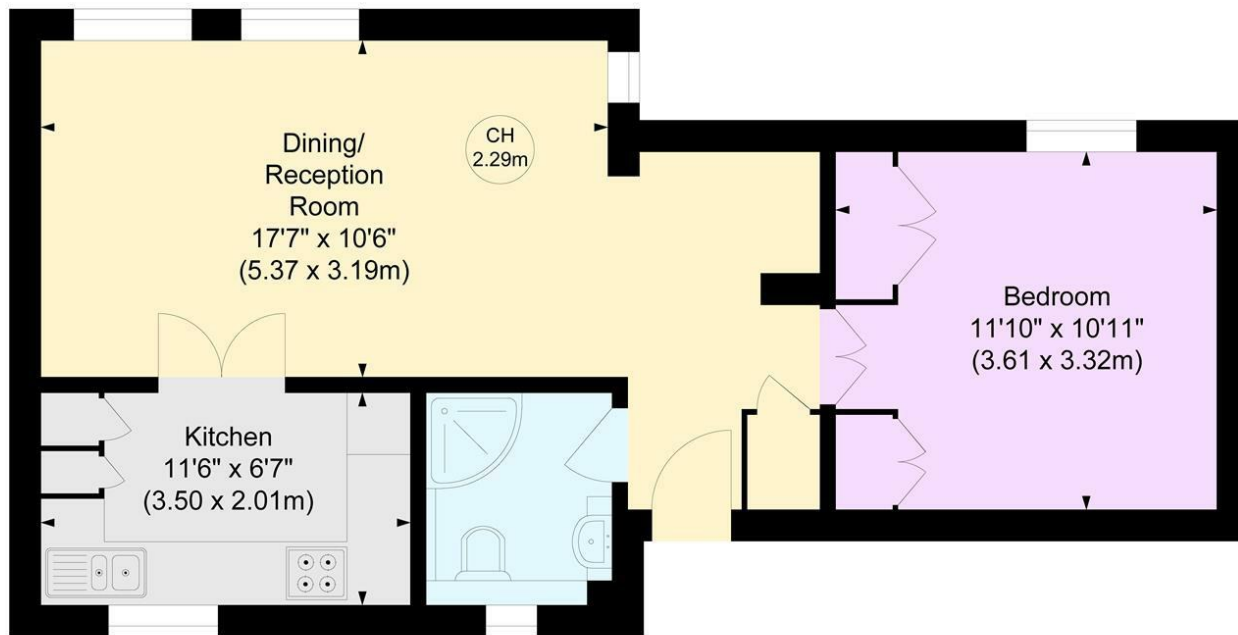
Transport links include Barons Court tube (District & Piccadilly Lines) and Hammersmith tube (Hammersmith & City, District, & Piccadilly Lines). A4 access is close by and Kensington High Street within walking distance.

Share of freehold.

LILY CLOSE, W14

Approximate gross internal area
520 sq ft / 48.32 sq m

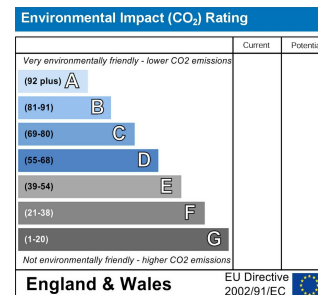
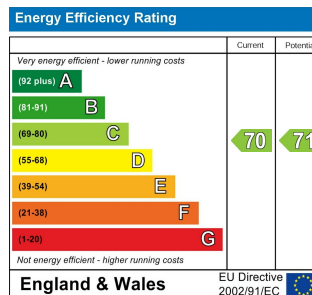
Key :
CH - Ceiling Height



SECOND FLOOR

Not to scale, for guidance only and must not be relied upon as a statement of fact.
All measurements and areas are approximate only

Whilst these particulars are produced in good faith and are believed to be correct, no guarantee is given, nor any responsibility accepted, by Tates nor by any of its representatives, for their accuracy. The particulars do not constitute part of any offer or contract, and it is recommended that such things as measurements, condition, structure, services, appliances, fixtures and fittings and facilities are all independently assessed by the prospective purchaser or renter of the subject property prior to committing to any contract.



135 Hammersmith Road, West Kensington, London W14 0QL

mail@tatesestates.co.uk

tatesestates.co.uk

Tates (Agents) Ltd. Registered in England and Wales No. 02356337
Registered Office: Imperial House, 8 Keane Street, London WC2B 4AS

